



Step 1 - Load a Network data

Create and load a custom network data file or select one from the available libraries (Optional: set the main rivers)



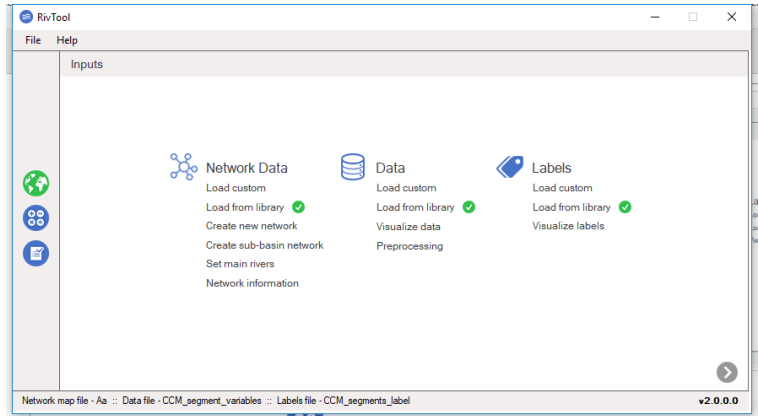
Step 2 - Load Data

Load a custom data file or one from the libraries



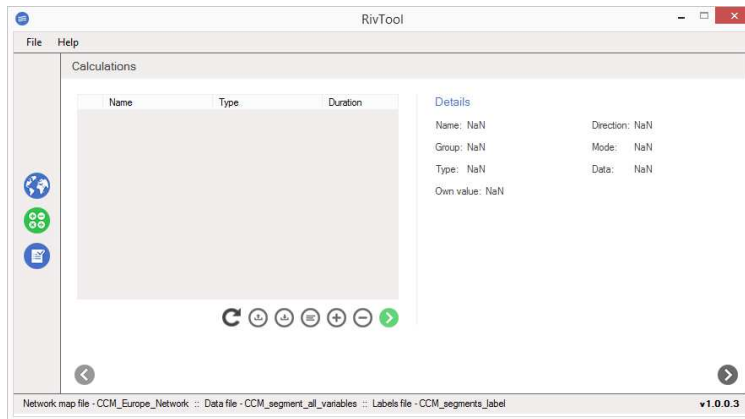
Step 3 - Load Labels

Load a custom labels file or one from the libraries



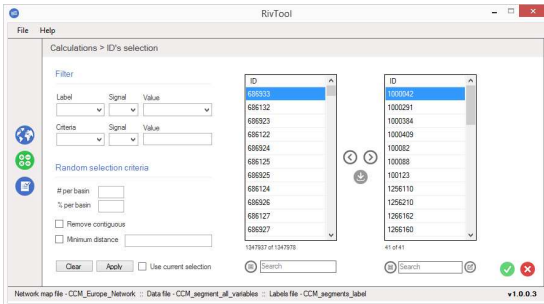
Step 4 - Go to the Calculations window

Press the forward sign at the bottom right corner of the Inputs Window to move to the Calculations window



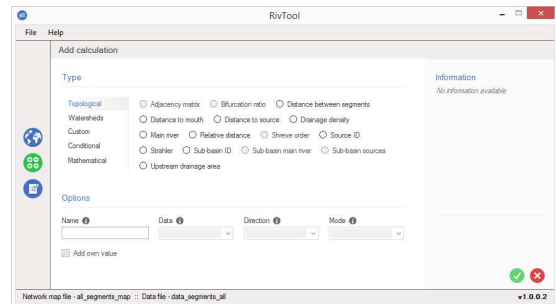
Step 5 - IDs selection

Select the IDs of the analysis units to be used in the calculations



Step 6 - Define calculations

Establish the calculations to be performed



Step 7 - Obtain results

Perform calculations and visualise results

